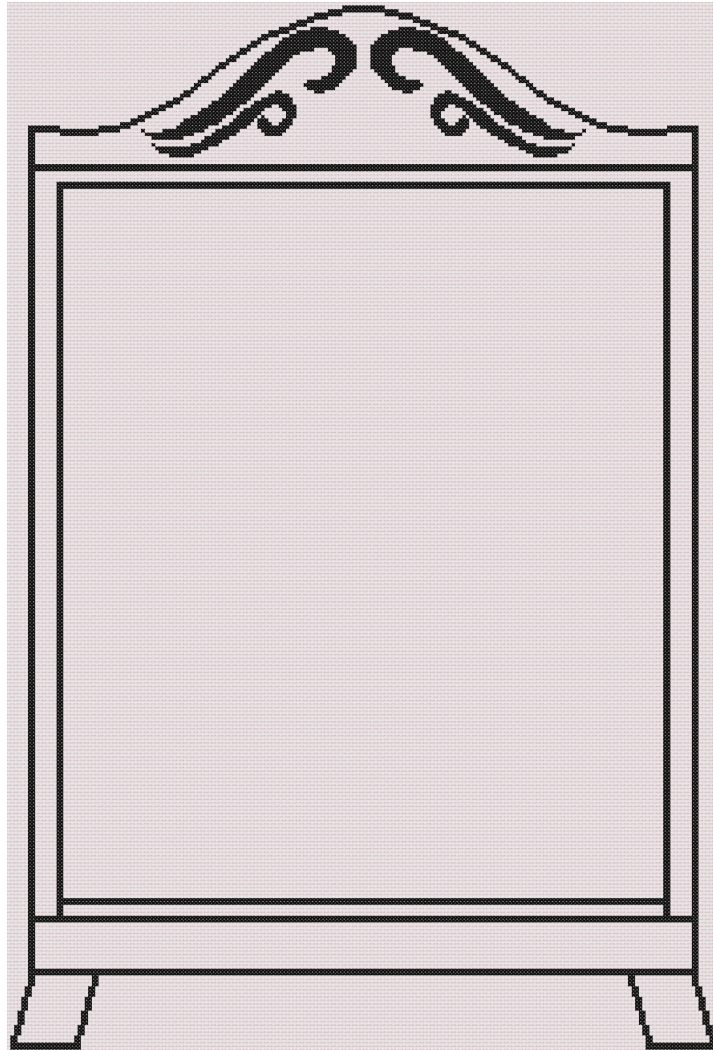


2026 Stitch-a-long



Design size: 200 x 296 stitches

Stitches used: Cross Stitch, Back Stitch

Stitched Area:

Aida 14 Ct - 14.29 in x 21.14 in (36.29 cm x 53.7 cm)

Aida 16 Ct - 12.5 in x 18.5 in (31.75 cm x 46.99 cm)

Aida 18 Ct - 11.11 in x 16.44 in (28.22 cm x 41.77 cm)

Recommended Material Size:

Aida 14 Ct - 19 in x 26 in (48 cm x 65 cm)

Aida 16 Ct - 17 in x 23 in (43 cm x 58 cm)

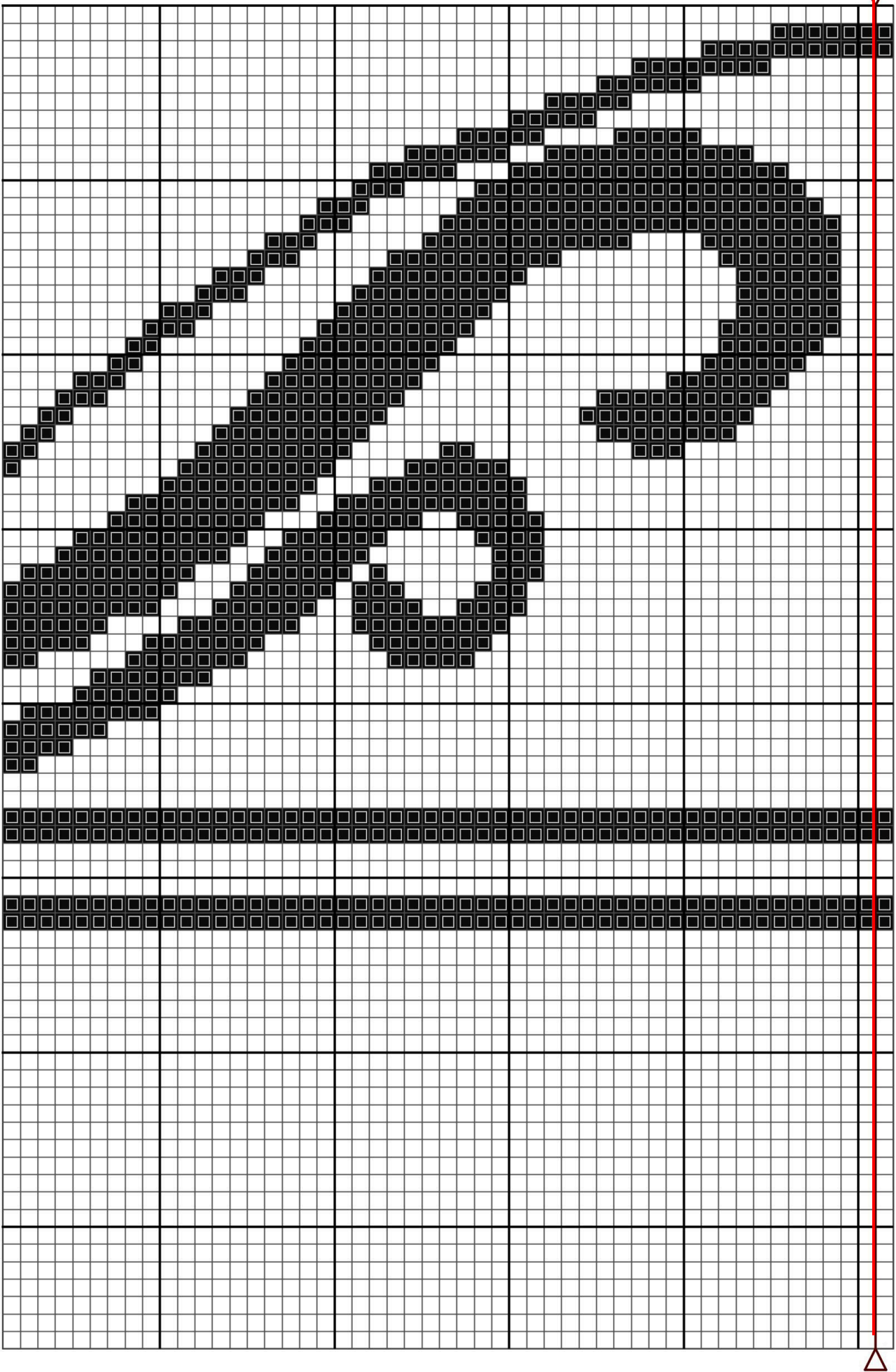
Aida 18 Ct - 16 in x 21 in (40 cm x 53 cm)

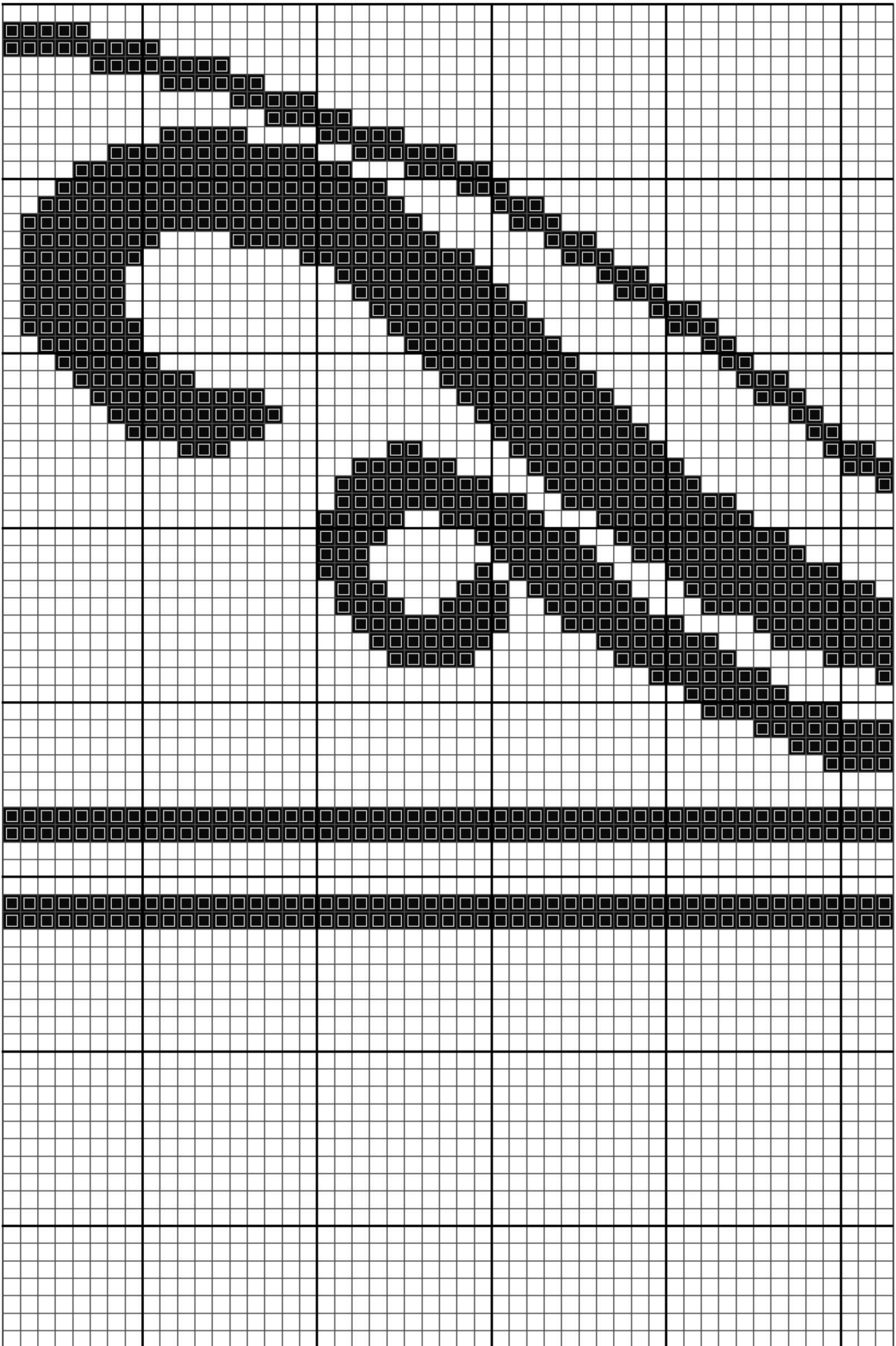
Recommended Needle Size:

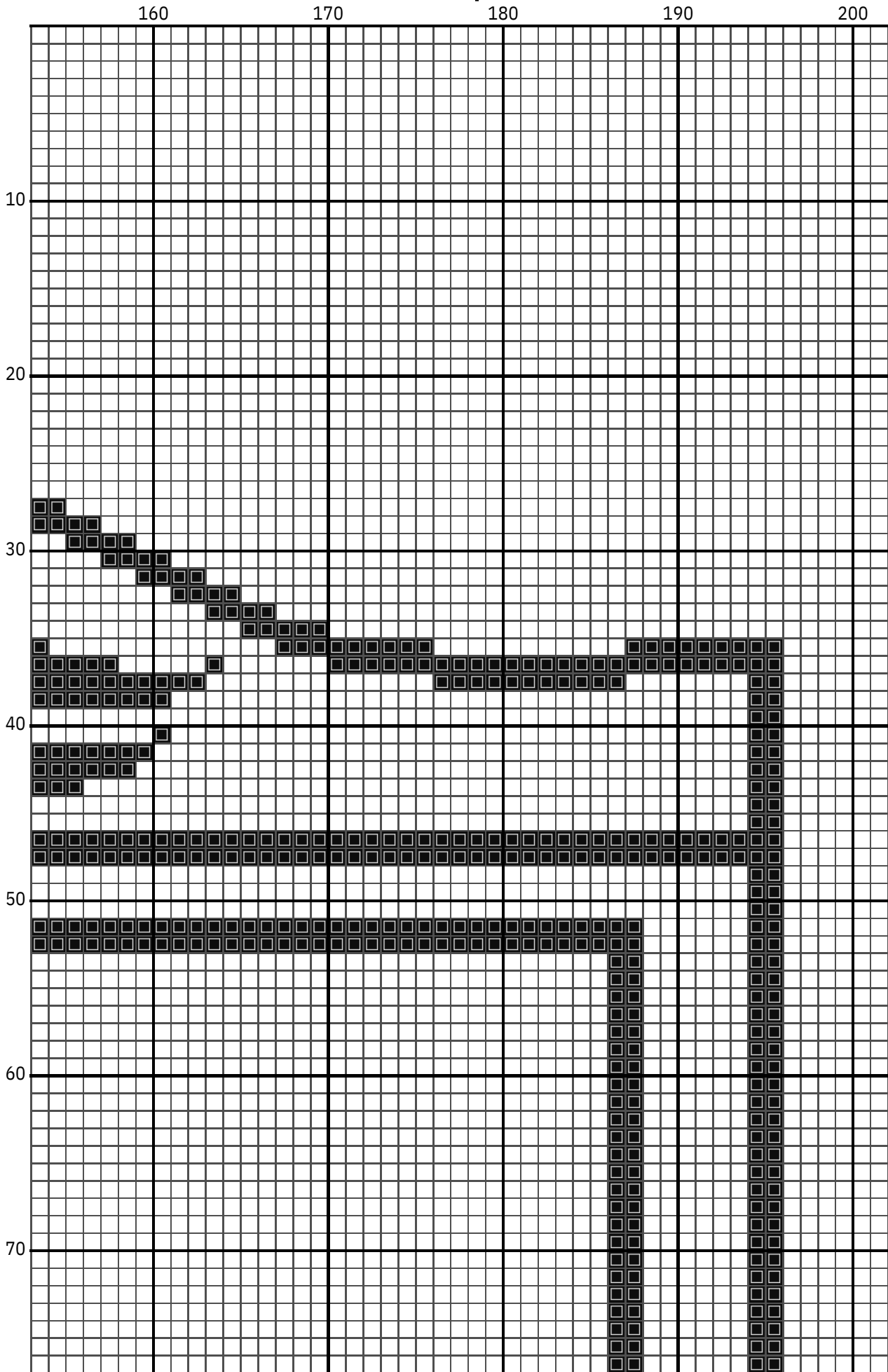
Aida 14 Ct - 24

Aida 16 Ct - 26

Aida 18 Ct - 28







5

10

20

30

40

50

80

90

100

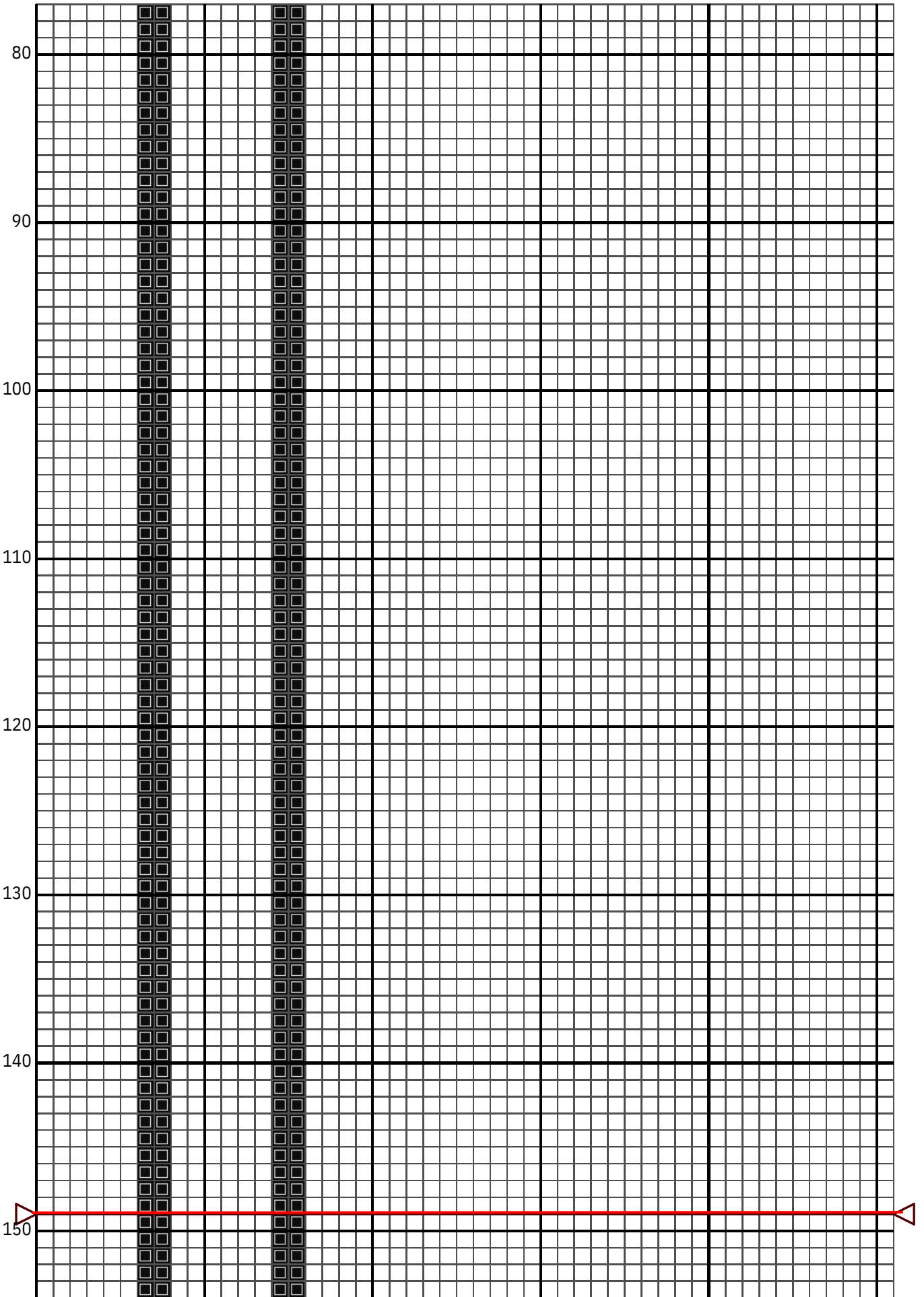
110

120

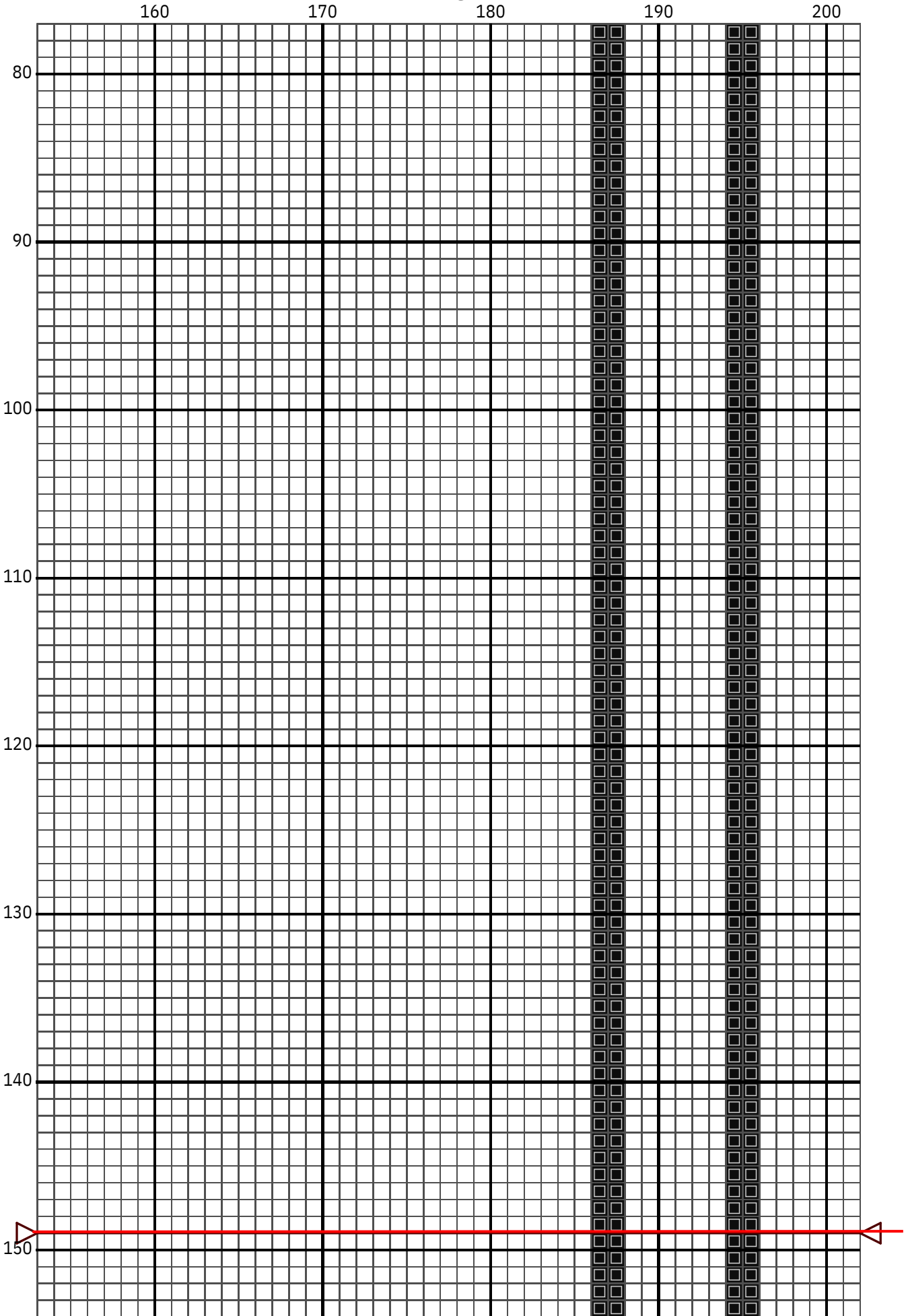
130

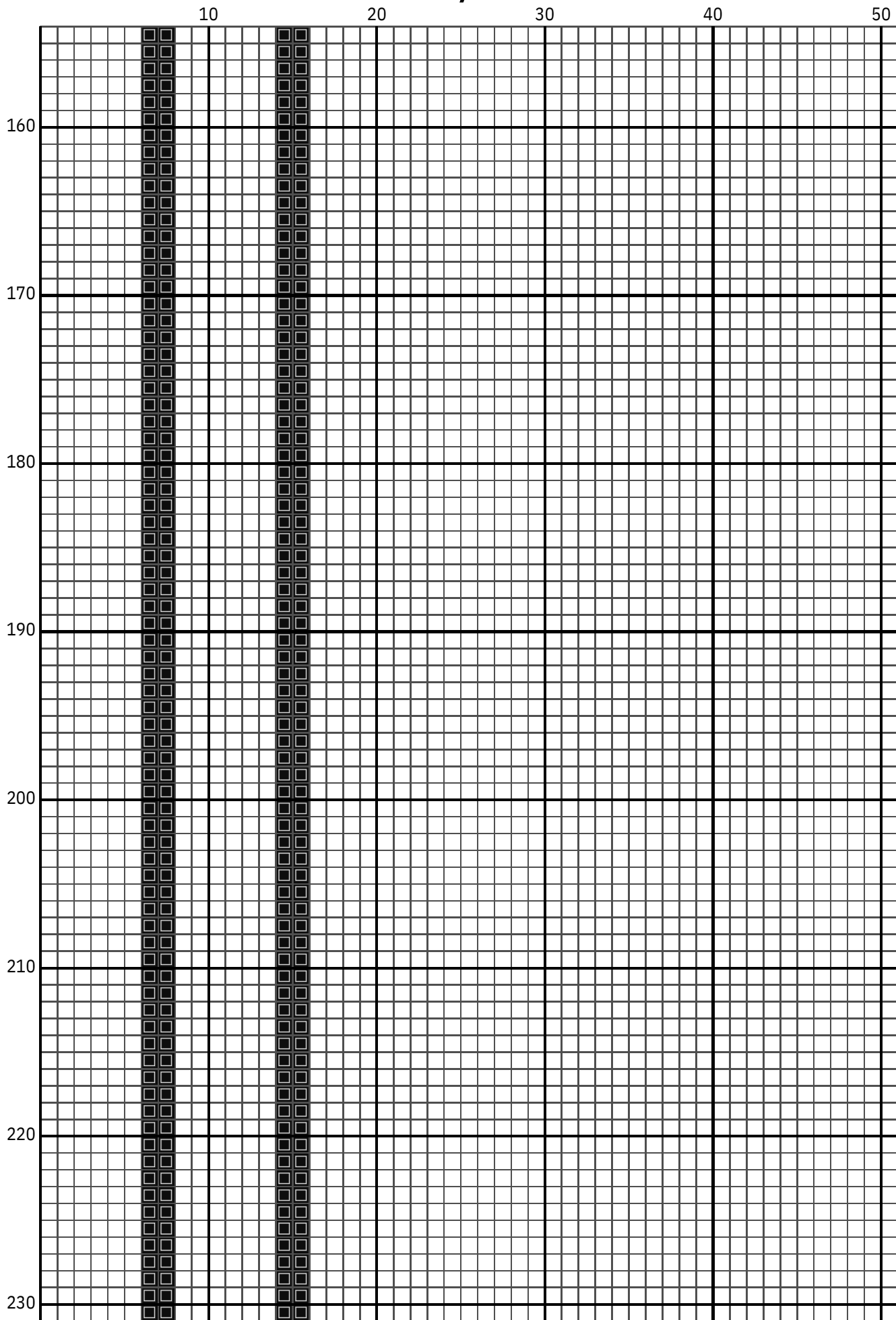
140

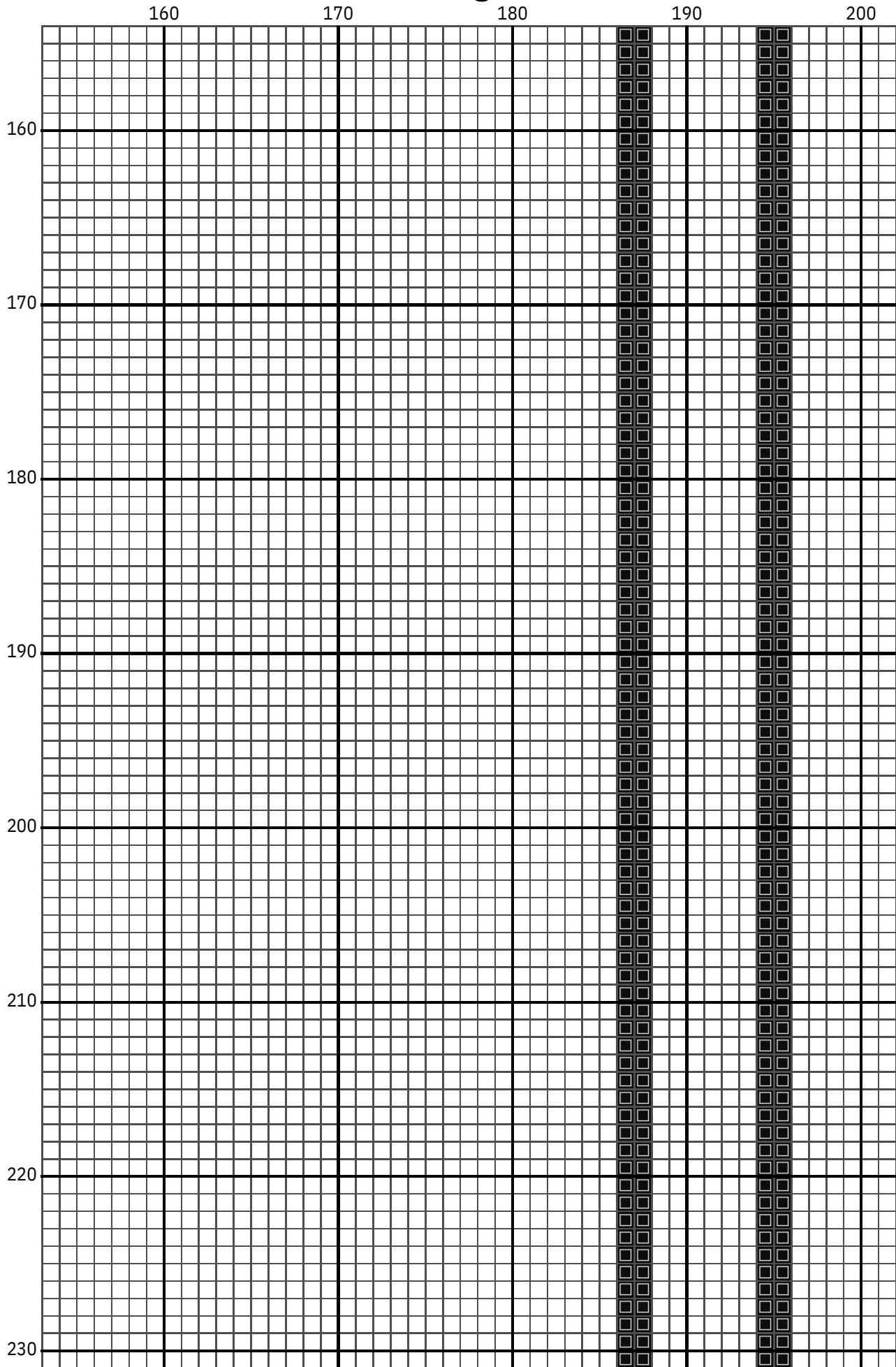
150



6







10

60

70

80

90

100

240

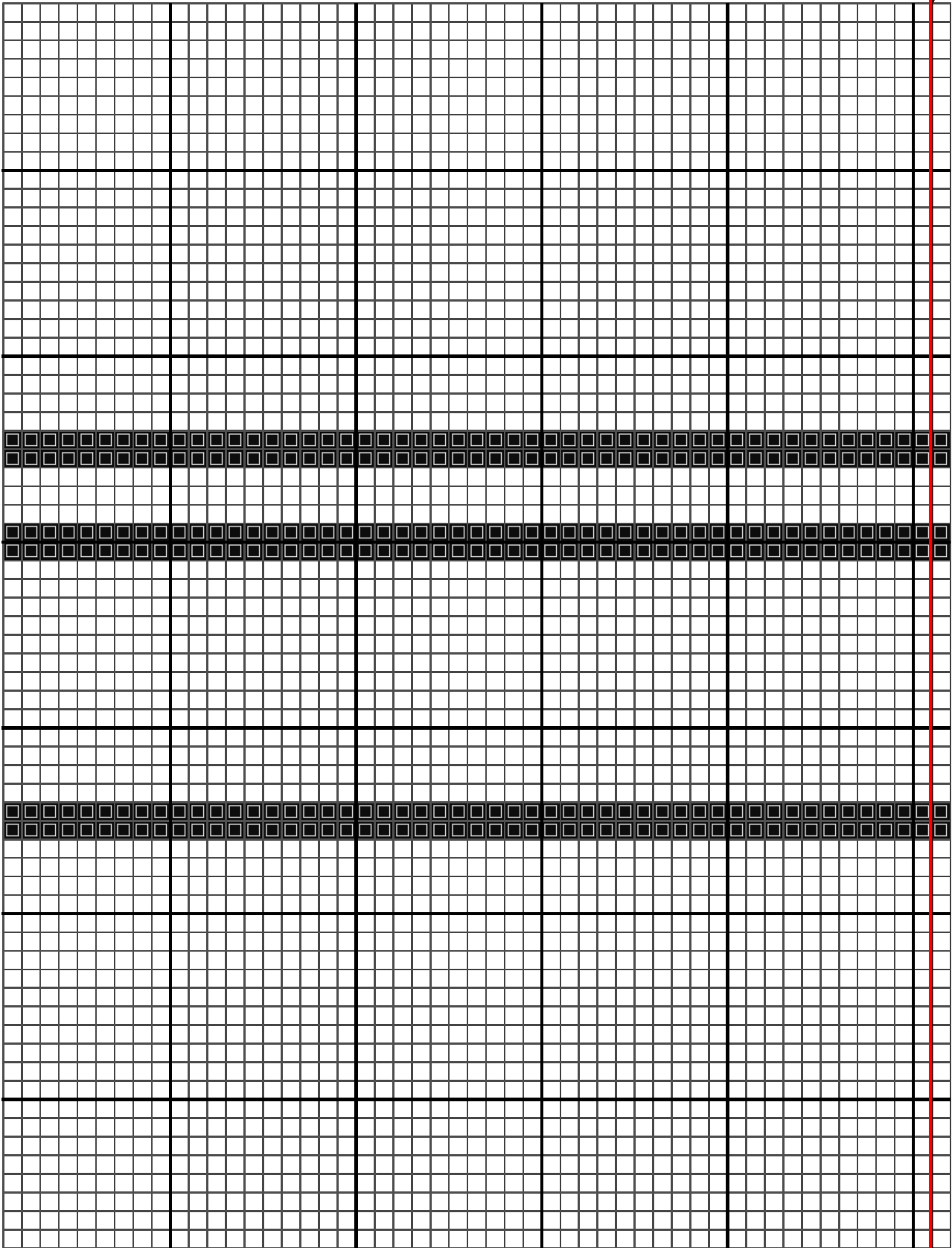
250

260

270

280

290



110

120

130

140

150

240

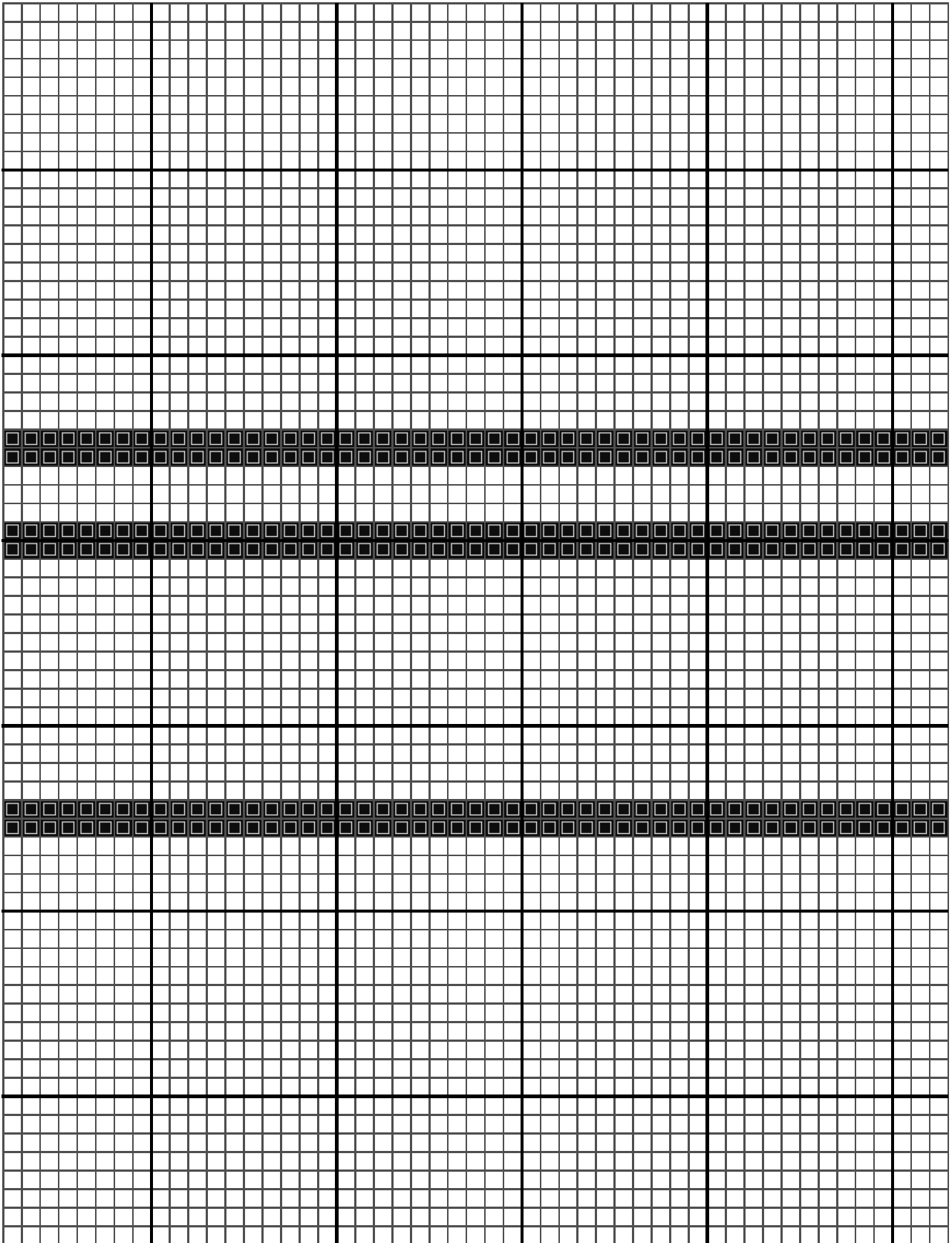
250

260

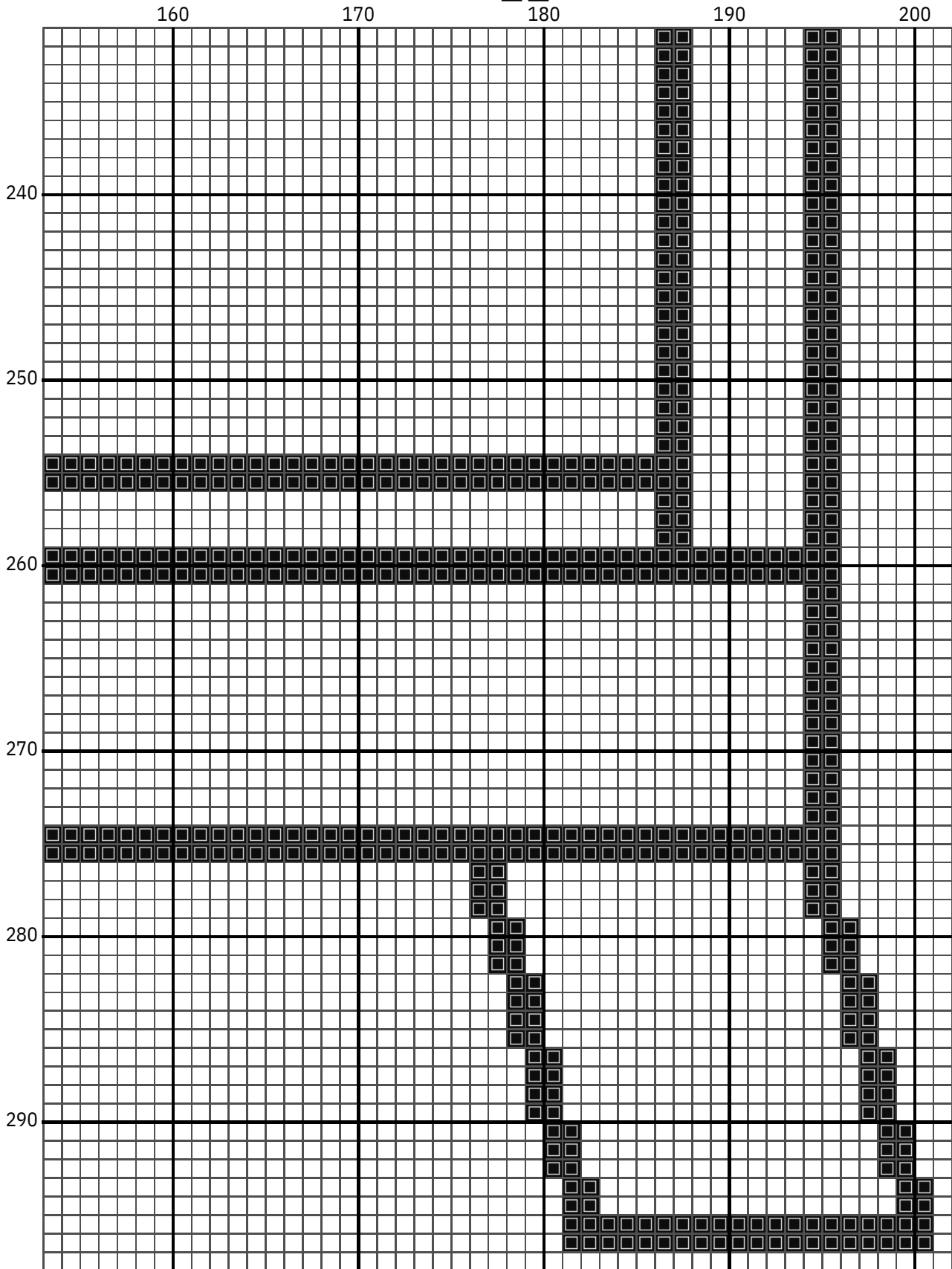
270

280

290





12



2026 Stitch-a-long
Floss list for crosses

Use 2 strands of thread for cross stitch

N	Symbol	Number	Name	Stitches
1	 	DMC 310	Black	5462

1	2	3	4
5			6
7			8
9	10	11	12